

! Attention: Please read the operating manual prior to operating the machine for the first time.



- 1 Start/Cancel Key
- 2 Half Load (1/2)
- 3 Programme selection Key
- 4 Salt level indicator light
- 5 "ON" indicator light

How to use your dishwasher:




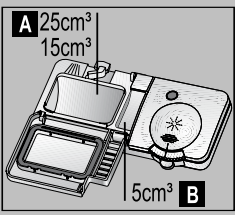
- Open the water tap.
- Plug to the mains.
- Open the door and load the dishwasher. Check if both upper and lower spray arms move freely.
- Fill enough detergent into the detergent dispenser and close the door.
- Use the Program Selection Key to choose your washing program.
- Check the salt and rinse aid level indicator lights. If necessary, refill salt and/or rinse aid.
- Start the program with the Start/Cancel button:

Attention

Avoid opening the door during the washing process. This interrupts the washing process, and hot steam will escape. When the door is closed, the programme will continue.

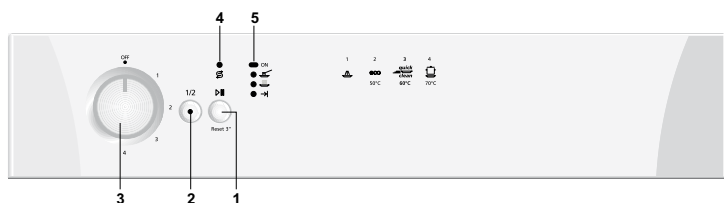
- Use the Program Selection key to turn the machine off again. When the progress indicator light "programme end" lights up, the programme is complete.
- Close the water tap. Pull out the plug.
- Allow your dishes to cool for 15 minutes, with the door open. Unload the dishes. Begin with the lower basket.

Programme Table

Programme number	1	2 Reference*	3	4
Programme name	 Pre-wash	eco	 Quick & Clean	 Intensive
Cleaning temperature	-	50°C	60°C	70°C
Degree of Soiling	Suitable for removing the remnants on the soiled dishes that will be kept waiting in the machine for a few days, and thus, for preventing the bad odor buildup. 	Most economical washing program for the medium soiled daily dishes that are kept waiting.	Daily washing program at which the medium soiled dishes that are kept waiting are cleaned in the fastest way.	Suitable for heavily soiled dishes, pots and pans.
Detergents A=25 cm³/15 cm³ B=5 cm³	-	A+B	A+B	A+B
Programme sequence (without options)	Pre-wash ▼ End	Pre-wash ▼ Wash ▼ Cold rinse ▼ Hot Rinse ▼ Dry ▼ End	Wash ▼ Cold rinse ▼ Hot Rinse ▼ Dry ▼ End	Pre-wash ▼ Wash ▼ Cold rinse ▼ Hot Rinse ▼ Dry ▼ End
Duration (min)	14	170	58	120
Water (l)	4,2	15	12,2	17,6
Energy (kWh)	-	1,02	1,32	1,67

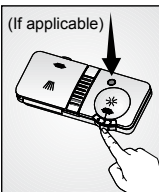
The consumption values shown in the table were determined under standard conditions. Differences may therefore occur under practical conditions.

* Reference programme for testing institutes The tests in accordance with EN 50242 must be carried out with a full water softener salt dispenser and a full rinse aid reservoir, and using the test programme.



- 1 Start/Cancel Key
- 2 Half Load (1/2)
- 3 Programme selection Key
- 4 Salt level indicator light
- 5 "ON" indicator light

Visual Indicator



Rinse aid level indicator light

If the indicator light comes on, you have to refill rinse aid (If applicable).

You can also tell whether rinse aid must be refilled by looking at the rinse aid dispenser. When the visual fill indicator is dark, there is enough rinse aid in the dispenser.

When the colour is light, open the dispenser and refill rinse aid.

ON/OFF

Machine will be switched on when you move the Programme Selection key to position "1". "ON" light will illuminate. Machine will be switched off when you move it to "OFF" position. All lights will turn off.

Program selection Key

Used to switch on/off the machine and select the washing programmes.

Half Load (1/2) button

When there are few dishes, you press this button after pressing the programme selection button. When turning the dishwasher on, the indicator light on the button lights up. This function helps you to save water and energy.

Start/Cancel key

You use the key to start the selected program; the light on the key lights up.

Stop the program with the Start / Cancel key if you would like to open the door once the dishwasher's washing program is running.

- On
- Wash
- Dry
- End

LED progress indicator lights

The program sequence throughout the washing process can be monitored from the progress indicator lights on the control panel.

! Warning

Following the washing stage, in order to drain and remove water from inside the machine completely, the machine will cancel for approximately 35 minutes. Do not worry this is not a fault. The End progress indicator light will come on when finished.

! Warning

Do not switch the machine off before End light comes on.

How to cancel the washing program

To cancel a program while the machine is operating: Press start/stop key for 3 seconds. The machine will drain the water inside the machine for 45 seconds. The program is cancelled when washing light goes off. Then, you can choose and start a new program.

! Important: Depending on the stage of the program you have cancelled, there may be detergent residue or rinse aid inside the machine and on the load. Make sure the items in the dishwasher are not used before washing properly.

Improper Loading Of Dishware

